



## Nicholas Parkway East Improvements

from Santa Barbara Boulevard to Country Club Boulevard

March 10, 2023

The City of Cape Coral is replacing water mains and installing new storm drainage along an approximately 1.2-mile area of Nicholas Parkway East from Santa Barbara Boulevard to Country Club Boulevard. Other improvements consist of installing new curb and gutter and swale work. The roadway pavement will be reconstructed to help motorists better navigate the curves along the parkway.

Early offsite work included constructing storm drainage improvements from Nicholas Parkway East north along SE 2<sup>nd</sup> Avenue, east on SE 10<sup>th</sup> Terrace, north on SE 1<sup>st</sup> Place, then east between the houses located on the south side of SE 9<sup>th</sup> Terrace and Hunter's Run Golf Club.

For more information we encourage you to visit the project website at [www.NicholasParkwayEast.com](http://www.NicholasParkwayEast.com) and sign up for construction updates.

### **Cultural Park/Academy Boulevard and Nicholas Parkway East Lane Closures and Detours Beginning 8 p.m. until 5 a.m. (Nighttime/Overnight) Monday, March 13 through Friday, March 17, 2023**

#### **Cultural Park/Academy Boulevard and Nicholas Parkway East Intersection**

**Monday, 3/13** beginning at 8 P.M., through 5 a.m. Crews will temporarily close all lanes of traffic on Cultural Park/Academy Boulevard between SE 13<sup>th</sup> Street and SE 11<sup>th</sup> Street while crews mill and pave the roadway at the Nicholas Parkway East intersection.

##### Cultural Park/Academy Boulevard detour

- Southbound through traffic will be detoured east on SE 11<sup>th</sup> Street; southeast on SE 11<sup>th</sup> Street; south on Country Club Boulevard; west on SE 14<sup>th</sup> Lane; back to Academy Boulevard.
- Northbound through traffic will be detoured east on SE 14<sup>th</sup> Lane; north on Country Club Boulevard; northwest on SE 11<sup>th</sup> Street; west on SE 11<sup>th</sup> Street; back to Cultural Park Boulevard.

##### Nicholas Parkway East lane closure and detour

- One westbound lane of traffic will remain open between Santa Barbara Boulevard and SE 6<sup>th</sup> Avenue during the Monday night work.
- Eastbound traffic will be closed between Santa Barbara Boulevard and Cultural Park/Academy Boulevard.

\* Eastbound through traffic will be detoured north on Santa Barbara Boulevard to SE 8<sup>th</sup> Street. Motorists should follow the detour signs.

#### **Nicholas Parkway East**

**Tuesday, 3/14 through Friday, 3/17** beginning at 8 P.M. through 5 a.m. Crews will temporarily close all lanes of traffic on Nicholas Parkway between Santa Barbara boulevard and Cultural Park/Academy Boulevard while crews make roadway repairs and mill and pave the roadway.

- Through traffic will be detoured north on Santa Barbara Boulevard and Cultural Park Boulevard to SE 8<sup>th</sup> Street. Motorists should follow the detour signs.
- All side streets will be closed at Nicholas Parkway East and motorists should follow the detour signs.
- Nicholas Parkway East local residential traffic will be accommodated, and flaggers will be present to assist motorists.

The location of the Nicholas Parkway work is expected to be completed in the following order:

Tuesday, 3/14, crews will mill and pave Nicholas Parkway east and west bound lanes between SE 6<sup>th</sup> Avenue and Cultural Park/Academy Boulevard. Crews will be making pavement repairs in the eastbound lane between SE 4<sup>th</sup> Avenue and SE 5<sup>th</sup> Avenue.

Wednesday, 3/15, crews will mill and pave portions of Nicholas Parkway between SE 4<sup>th</sup> Avenue and SE 5<sup>th</sup> Avenue. Crews will be making pavement repairs in the eastbound lane between SE 2<sup>nd</sup> Avenue and SE 4<sup>th</sup> Avenue.

Thursday, 3/16, crews will mill and pave portions of Nicholas Parkway eastbound lane between SE 2<sup>nd</sup> Avenue and SE 4<sup>th</sup> Avenue.

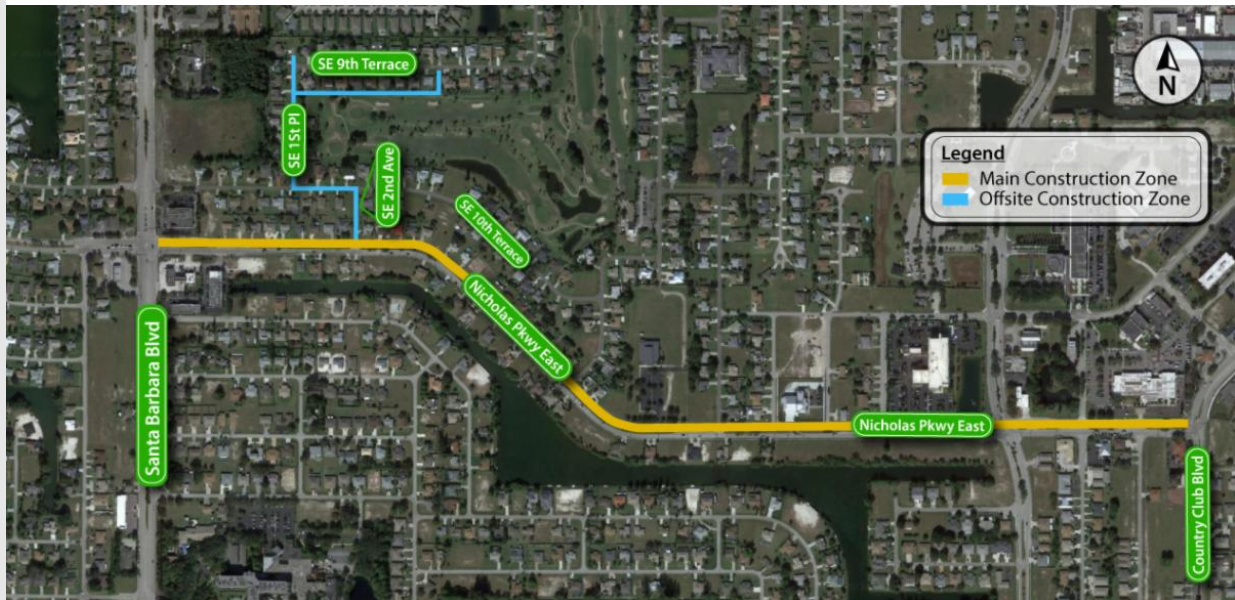
Friday, 3/17 will be used as a makeup day if the above schedule is pushed back due to inclement weather or unforeseen conditions.

During all lane closures:

- Residents may need to access their property from a different direction. Detour directional signs will be posted to assist.
- **Residents and businesses should expect lights and noise from trucks and OSHA-mandated back-up beepers, which is unavoidable.**

Drivers, bicyclists, and pedestrians should use caution. This schedule may be subject to change due to inclement weather and unforeseen conditions.

For additional information, contact the Public Information Consultant for the project, Cella Molnar & Associates, Inc. at 239-337-1071 or [info@NicholasParkwayEast.com](mailto:info@NicholasParkwayEast.com).



[Click to Enlarge Map](#)